

TABLE OF CONTENTS

STOCK MARKET METRICS	3
My Population of Tickers	3
SPY & QQQ CHARTS	3
SPY	4
QQQ	5
Volume Analysis: Volume > 10 Day Vol Avg (Difference > 2M+)	6
Volume Analysis: Volume > 30 Day Vol Avg (Difference > 2M+)	7
Current Gainers: Stocks Up 2% (and Greater)	8
Current Gainers: Stocks Up \$2.00 (and Greater)	9
Current Laggards(By Sector): Stocks Down -\$2.00 (and Less)	10
Current Laggards (By Dollar Value): Stocks Down -\$2.00 (and Less)	11
Daily Charts: 10/20 Moving Averages in Close Proximity of Crossing	12
# of Stocks Below Certain SMAs	13
Daily Chart: Review The MACD For Cross(ing)	14

Markets Notes: Aug 31, 2022

All Metrics are based on Daily Charts unless otherwise stated.

Yields have been on a recent run since August 5 and as they climb; equities have an inverted movement. I anticipate the yields to start having a cooling off period with some consolidation and into a pullback, thus bringing some relief to the equities markets; more specifically to the semiconductors and the high beta information technology stocks.

In the event we see some pulling back of the yields we shall see the equities react accordingly; whereas, if the equities experience waves of bullish momentum then the expectation is that yields will react.

The NASDAQ-100 was holding up the best out of the indexes as it was 'in the green' going into the close of the market today; nevertheless, the big money dropped the market and it could not hold. Point here is it was stronger than the group, so something to keep an eye on.

Futures (Main Indexes: SP500, NASDAQ-100, DOW JONES INDUSTRIAL)

- Below the 50 moving average

In Summary: Maintain your Patience, Discipline, and Follow The Trading Plan. There is plenty of time to get into the market, so why rush?

STOCK MARKET METRICS

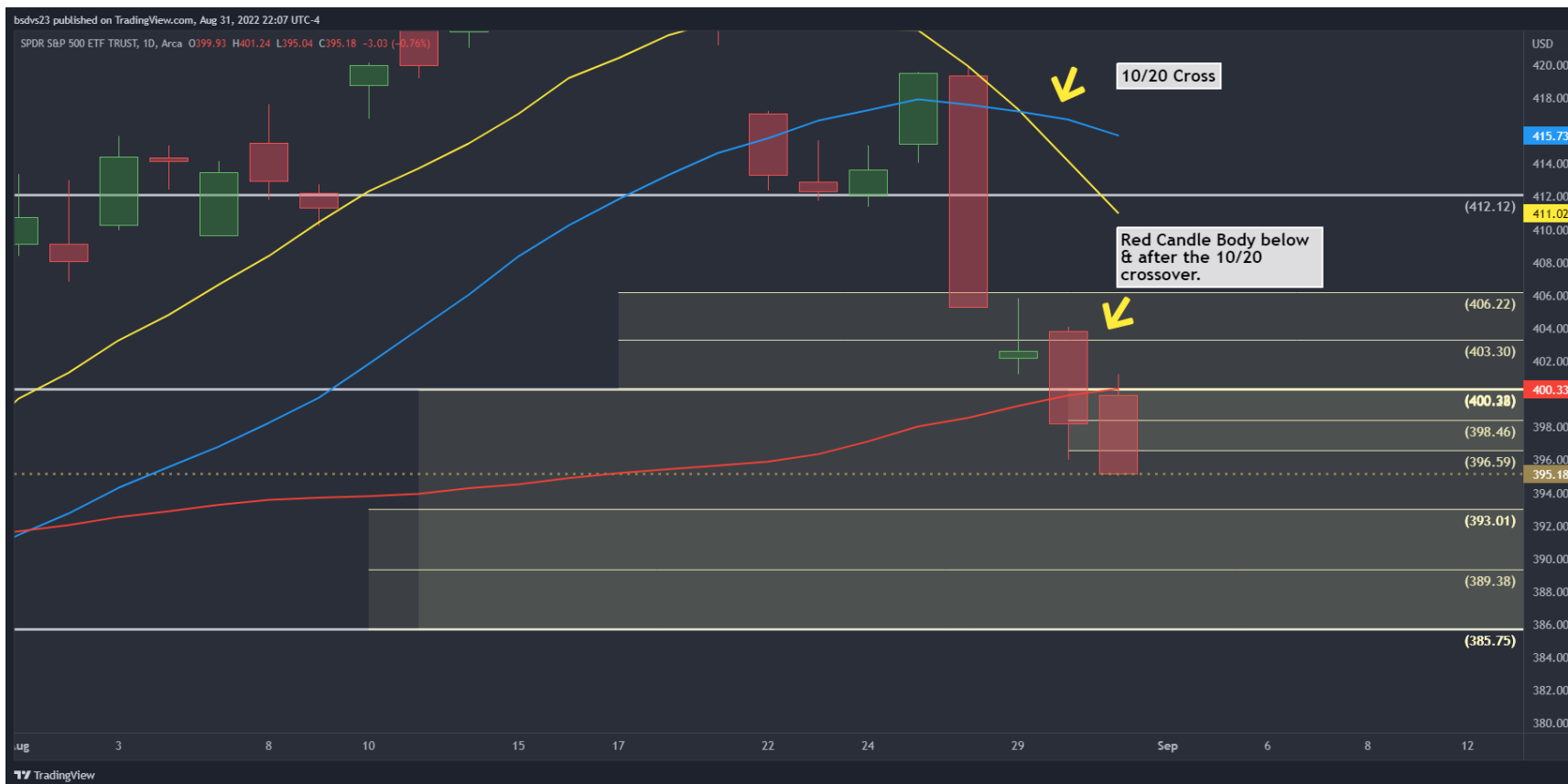
My Population of Tickers

The following stock symbols are used in the following metrics.

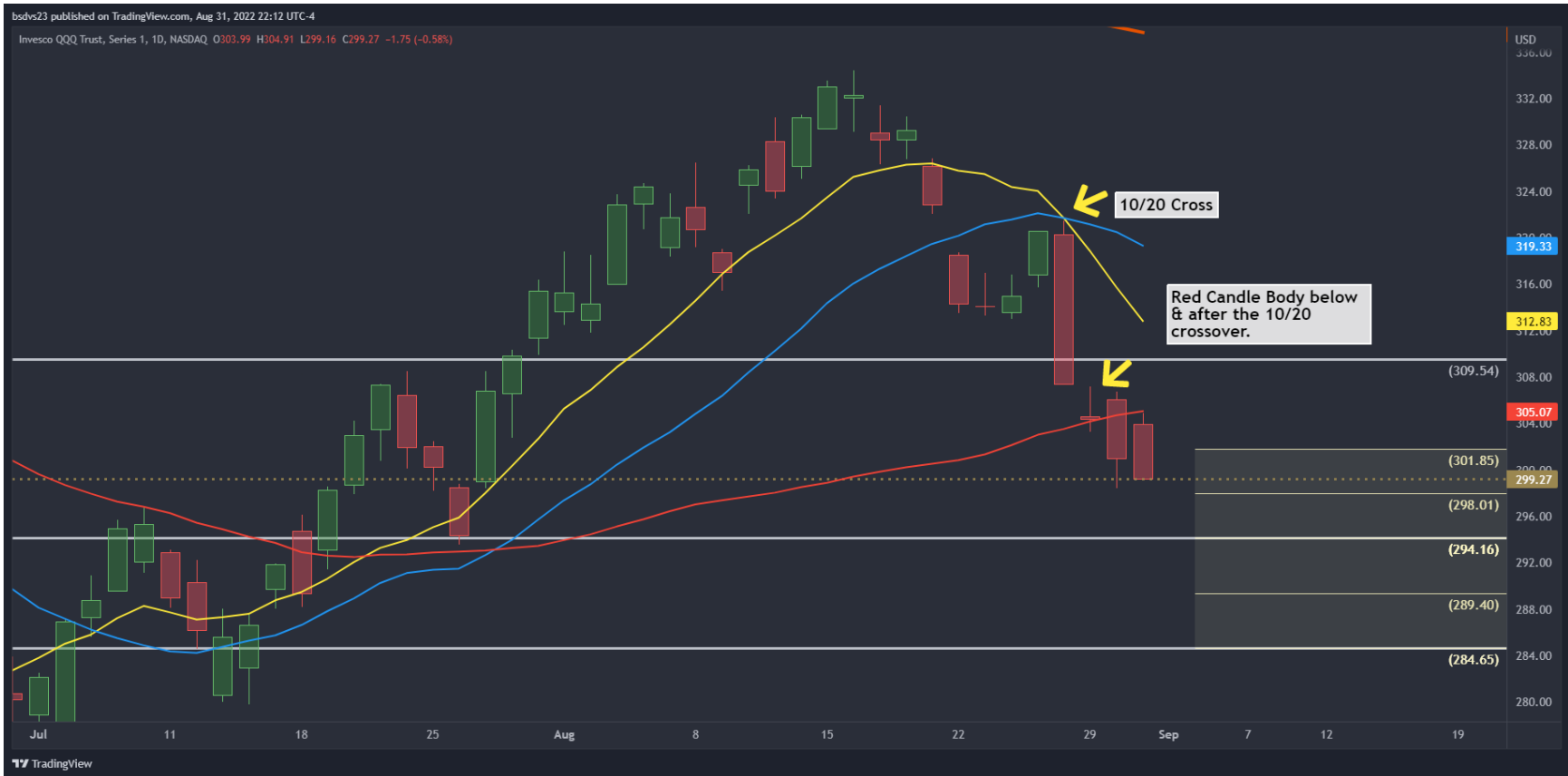
AA, AAL, AAPL, ABNB, AMC, AMD, AMZN, BA, BABA, BAC, BIDU, C, CAT, CCL, CHWY, CLX, COF, COIN, COST, CRM, CSCO, CVX, DAL, DIS, DJI, DJT, F, FDX, GME, GOOGL, HD, HLT, HON, HOOD, IBM, INTC, INTU, JBLU, JNJ, JPM, LEN, LOW, LUV, LVS, LYFT, MA, MAR, MCD, META, MS, MSFT, MU, NCLH, NDAQ, NDX, NFLX, NIO, NKE, NVDA, OXY, PFE, PTON, PYPL, QCOM, RBLX, RCL, ROST, SHOP, SNAP, SOX, SPX, SQ, TGT, TJX, TSLA, TWTR, UAL, UBER, V, WFC, WMT, WYNN, XOM, Z, ZM

SPY & QQQ CHARTS

SPY



QQQ

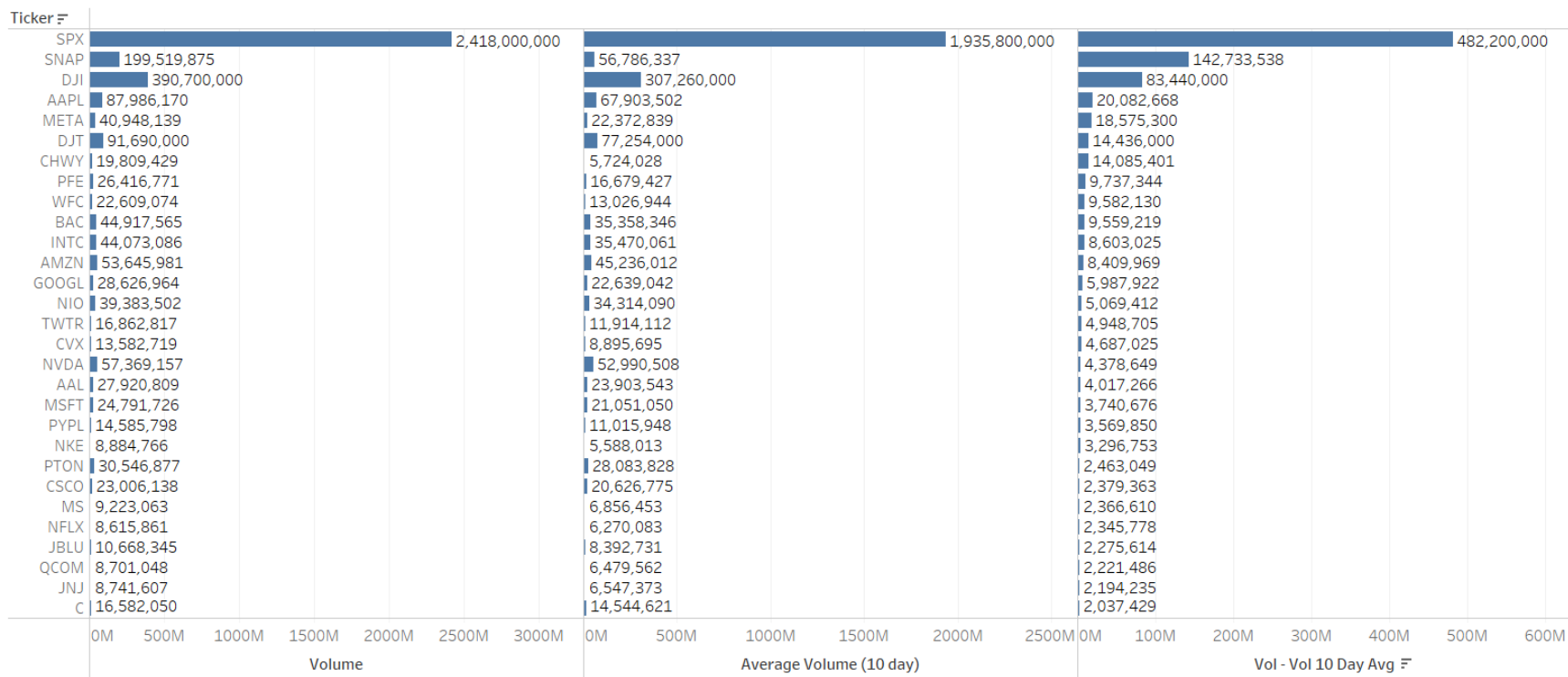


Volume Analysis: Volume > 10 Day Vol Avg (Difference > 2M+)

This metric shows the current day volume of the stock and compares it to its historical volume average over the past 10 trading days. The column to the right shows the variance between today's volume and the average volume days mentioned above.

- The Variance must be at least 2 Million

Volume Analysis: Volume > 10 Day Vol Avg (Difference > 2M+)

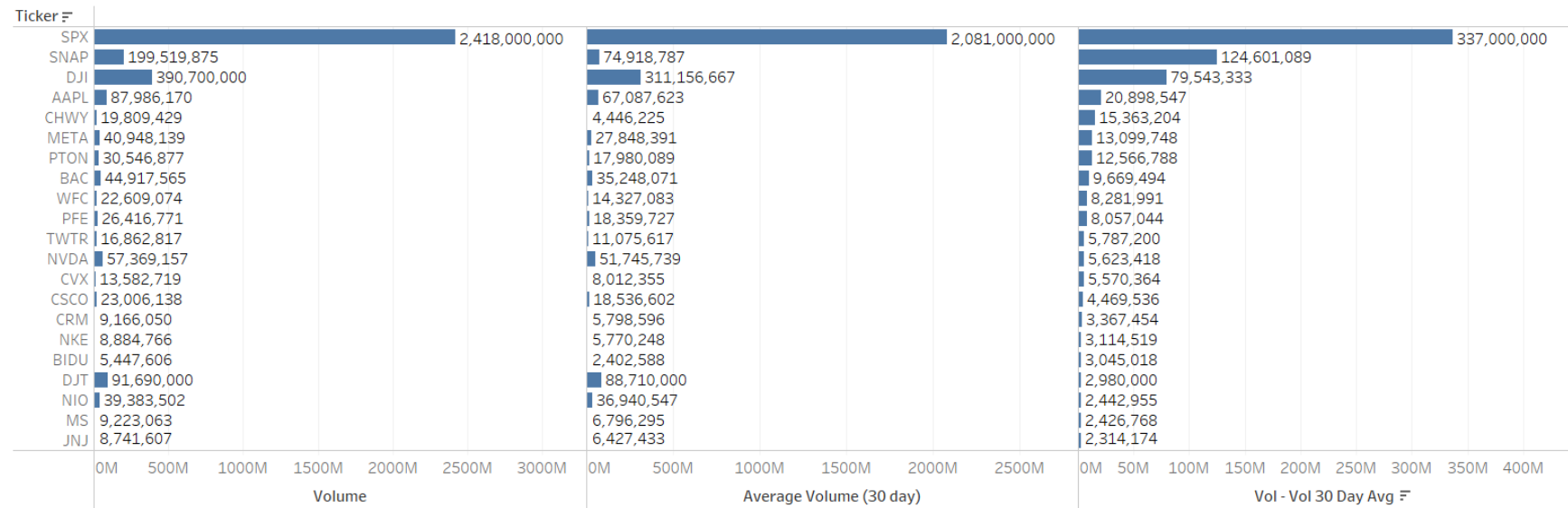


Volume Analysis: Volume > 30 Day Vol Avg (Difference > 2M+)

This metric shows the current day volume of the stock and compares it to its historical volume average over the past 30 trading days. The column to the right shows the variance between today's volume and the average volume days mentioned above.

- The Variance must be at least 2 Million

Volume Analysis: Volume > 30 Day Vol Avg (Difference > 2M+)



Current Gainers: Stocks Up 2% (and Greater)

This metric displays the stocks who are ascending in the market with a percentage increase of at least 2%.

Current Gainers: Stocks Up 2% (and Greater)

Ticker	Sector	
	Consumer Services	Technology Services
BIDU		4.561
LVS	2.674	
META		3.671
PTON	6.367	
SNAP		8.691

Current Gainers: Stocks Up \$2.00 (and Greater)

This metric displays the stocks who are ascending in the market with a net increase of at least \$2.

Current Gainers: Stocks Up \$2.00 (and Greater)

Ticker	≡	Sector	
BIDU		Technology Services	6.280
META			5.770
NFLX			2.910

Current Laggards(By Sector): Stocks Down -\$2.00 (and Less)

Current Laggards (By Sector): Stocks Down -\$2.00 (and Less)

Ticker ↕	Sector								
	Null	Commercial Services	Consumer Durables	Electronic Technology	Energy Minerals	Producer Manufacturing	Retail Trade	Technology Services	Transportation
DJI	(\$280.44)								
DJT	(\$145.19)								
NDX	(\$70.67)								
SOX	(\$31.24)								
SPX	(\$31.16)								
HD							(\$4.68)		
NVDA				(\$3.74)					
CRM								(\$3.55)	
MA		(\$3.44)							
LOW							(\$3.08)		
CHWY							(\$3.06)		
FDX									(\$2.67)
V		(\$2.67)							
CVX					(\$2.56)				
CAT						(\$2.23)			
QCOM				(\$2.14)					
TSLA			(\$2.09)						
AMD				(\$2.07)					
COST							(\$2.04)		

Current Laggards (By Dollar Value): Stocks Down -\$2.00 (and Less)

Current Laggards (By Dollar Value): Stocks Down -\$2.00 (and Less)

Ticker	Sector	
DJI	Null	(\$280.44)
DJT	Null	(\$145.19)
NDX	Null	(\$70.67)
SOX	Null	(\$31.24)
SPX	Null	(\$31.16)
HD	Retail Trade	(\$4.68)
NVDA	Electronic Technology	(\$3.74)
CRM	Technology Services	(\$3.55)
MA	Commercial Services	(\$3.44)
LOW	Retail Trade	(\$3.08)
CHWY	Retail Trade	(\$3.06)
FDX	Transportation	(\$2.67)
V	Commercial Services	(\$2.67)
CVX	Energy Minerals	(\$2.56)
CAT	Producer Manufacturing	(\$2.23)
QCOM	Electronic Technology	(\$2.14)
TSLA	Consumer Durables	(\$2.09)
AMD	Electronic Technology	(\$2.07)
COST	Retail Trade	(\$2.04)

Daily Charts: 10/20 Moving Averages in Close Proximity of Crossing

This metric identified stocks within a specific threshold of having a crossover of the simple moving average 10 & simple moving average 20 in either direction. The purpose for this metric is to have visibility into those that “might be” experiencing a potential change in trend.

Daily Charts: 10/20 Moving Averages in Close Proximity of Crossing

Sector	Ticker	10/20 Diff	Price
Consumer Services	DIS	0.1940	112.1
Retail Trade	BABA	0.2890	95.4
	ROST	0.4770	86.3
Technology Services	IBM	0.0065	128.5

of Stocks Below Certain SMAs

This metric pertains to the total number of stocks (out of the population) that meet the criteria specified in the description.

- This can provide another perspective into the complexion of the market, depth of strength (within the population of stocks used in these metrics), etc.
- An Above metric will be added in upcoming metrics.

of Stocks Below Certain SMAs

My Stock Population	85.00
10 & 20 Tight	4.00
Below 10	80.00
Below 20	81.00
Below 10 and 20	78.00
Below 50	53.00
Below 20 and 50	52.00
Below 10, 20 and 50	51.00
Below 200	79.00
Below 10, 20, 50 and 200	50.00
Vol Greater Than Vol 10 day avg	61.00

Daily Chart: Review The MACD For Cross(ing)

This metric provides you with insight into which stocks (of the population used) are experiencing a convergence (crossover) of the MACD or within close proximity of crossing.

Daily Chart: Review The MACD For Cross(ing)

Sector	Description	Ticker	MACD Metric
Consumer Durables	NIO Inc.	NIO	0.02
Consumer Services	Carnival Corporation	CCL	-0.07
	D/B/A Royal Caribbean Cruises Ltd.	RCL	0.00
	Norwegian Cruise Line Holdings Ltd.	NCLH	-0.07
Energy Minerals	Exxon Mobil Corporation	XOM	0.17
Technology Services	Snap Inc.	SNAP	0.00
Transportation	JetBlue Airways Corporation	JBLU	-0.08